



Protecting health in an environment challenged by climate change

Dr Bettina Menne

Dr David Mercer

WHO Regional Office for Europe

Climate change in the WHO European Region



Third Ministerial Conference on Environment and Health



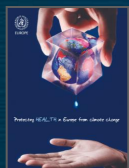
Fourth Ministerial Conference on Environment and Health (extreme events and energy)



World Health Day 2007: focus on health security



Nobel Peace Prize to the IPCC



World Health Day 2008: “Protecting health in Europe from climate change”



European Framework for Action



**Climate change is the price being paid
for policies that favored the growth of
economic wealth over the protection
of ecological health.**

Dr Margaret Chan, RC, September, 2010

The health effects of climate change are visible (key messages, 5th Ministerial Conference)

- Health effects are already observed even with moderate levels of climate change.
- Shifts in the distribution and behaviour of insect and bird species are early signs that biological systems are already responding to climate change.
- More frequent and intense extreme weather events threaten thousands of people.
- Public health security is at stake.
- Climate change will affect some of the most fundamental prerequisites of health: food, water and air.
- Climate change increases health inequalities.



- **“Climate change has the potential to roll back many of the health gains we made during the 20th century. I see it as one of the most dangerous threats to health in the 21st century. Policy makers need to think about the health impact of all the actions they decide to take – or not to take – to tackle climate change. They will have a major impact on the health of both current and future generations.”**

Dr Zsuzsanna Jakab, WHO Regional Director for Europe



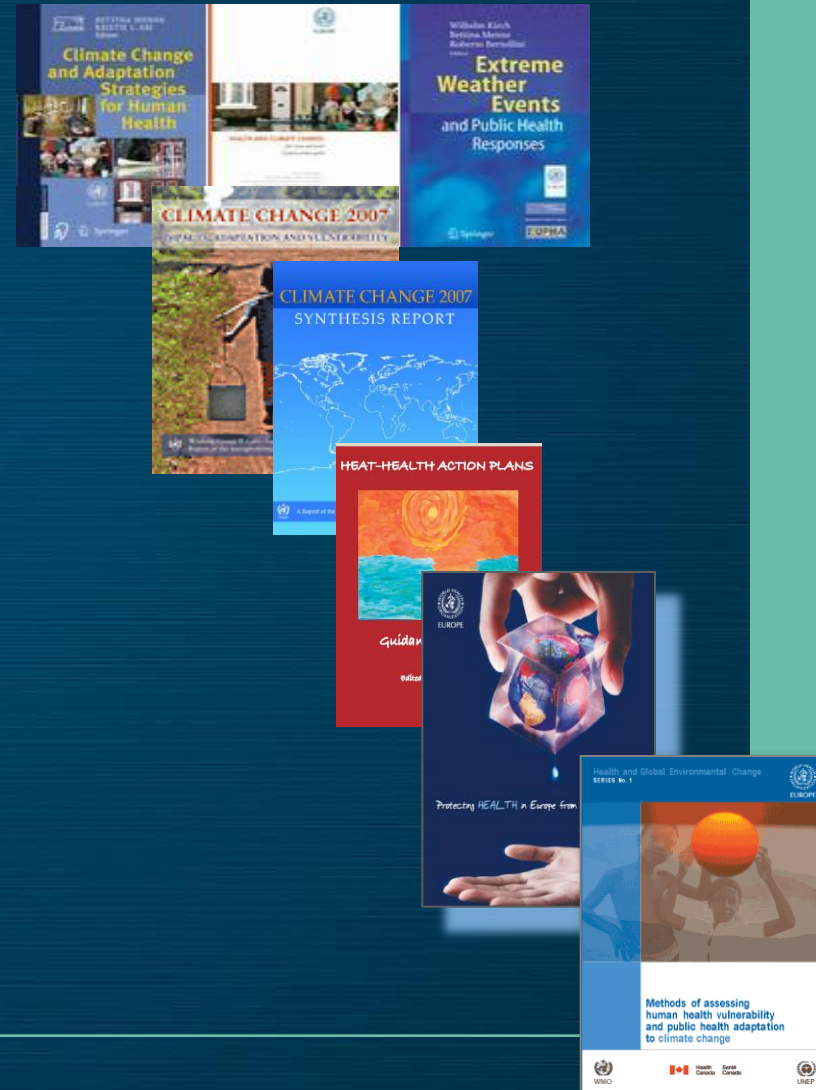
The objectives of the European Regional Framework for Action on climate change and health



- to integrate health at all levels of political developments;
- to strengthen health and social services to improve their capacity to prevent, prepare for, and cope with climate change;
- to raise awareness;
- to increase the health and environment sectors' contribution to reducing greenhouse gas emissions;
- to share best practices, research, data, information, technology and tools at all levels on climate change, environment and health.

WHO supports European countries

- Providing evidence:
 - National assessments
 - Research
- Extreme events prevention and response
- Developing norms and standards
- Partnership with European and UN agencies
- Capacity development
- Outreach and information





Activities in the Arctic and subarctic

WHO supports and promotes national/regional health impact and vulnerability assessments

- **13 European countries have developed them**
- **From the North**
 - **Finland, Sweden, Norway**
 - **On its way the discussion with the Russian Federation**

WHO carries out Pilot Project in Arkhangelsk Region



Part of 7 country pilot initiative: develop health adaptation plans

Scope:

To provide quantitative and qualitative information on the health effects of climate change in the pilot area

Methods:

Time series analysis, GIS, interviews, modelling

Expected outcomes:

- Information on trends in communicable and non-communicable diseases;
- Health system preparedness
- Vulnerability of the Nenets autonomous region

Project leader: WHO CGS, Russia Office and Northern University



WHO promotes and develops theme specific: public health guidance



Cold, heat, fires and floods
With Northern University:

extreme events protection for
Northern Countries

With Thule University:

evidence of the health effects
of cold; cold prevention
guidance

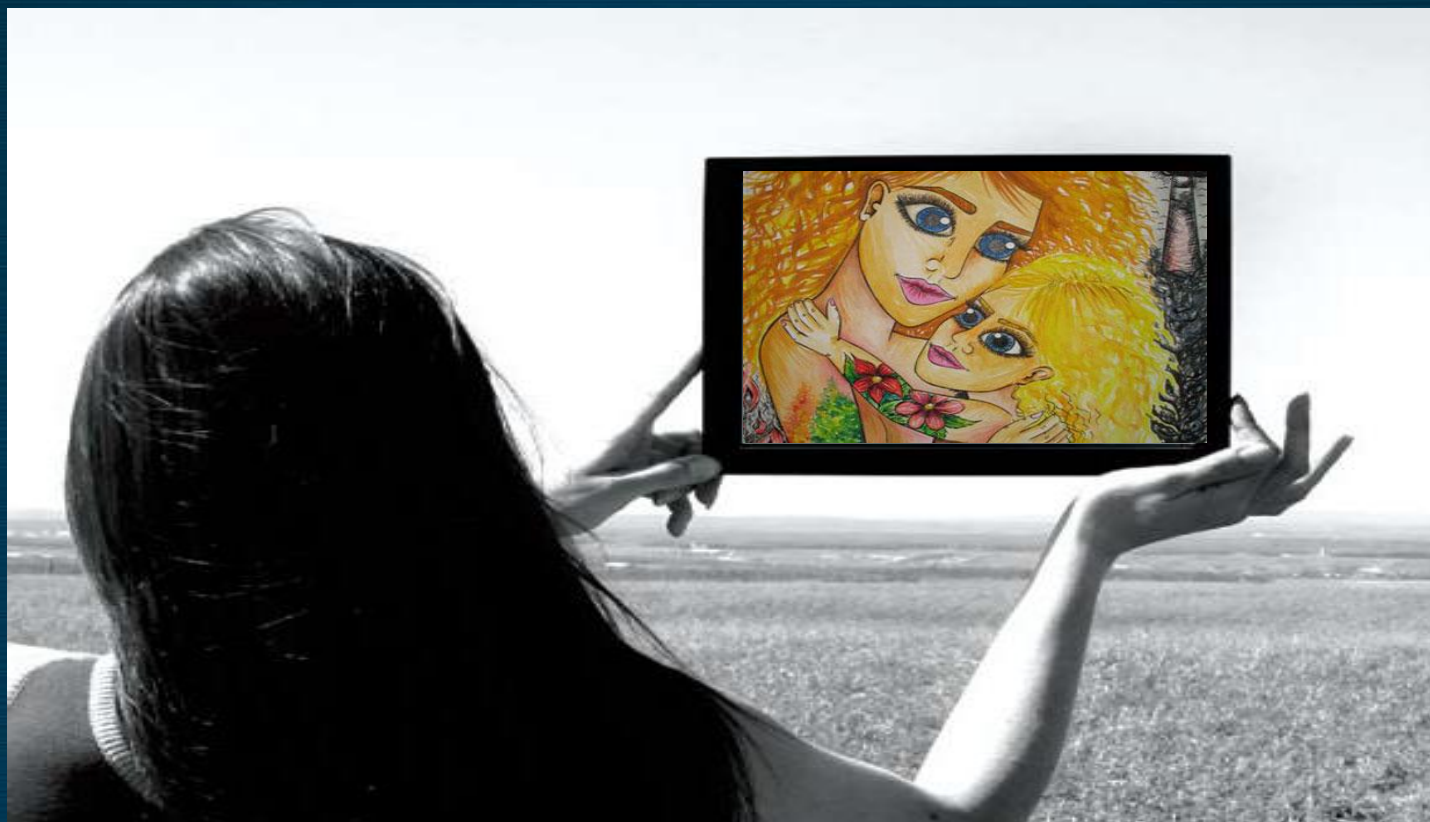
Cooperation with the journal on
Circumpolar Medicine

Expert meeting in Bonn 29 – 30
November on extreme weather
events



Collaboration and partnership

- **Arctic climate change assessment;**
- **AMAP;**
- **EEA;**
- **HQ at the moment is on an expedition to the arctic with artists and scientists**



**For information please contact: Dr
Bettina Mene
Thank you**